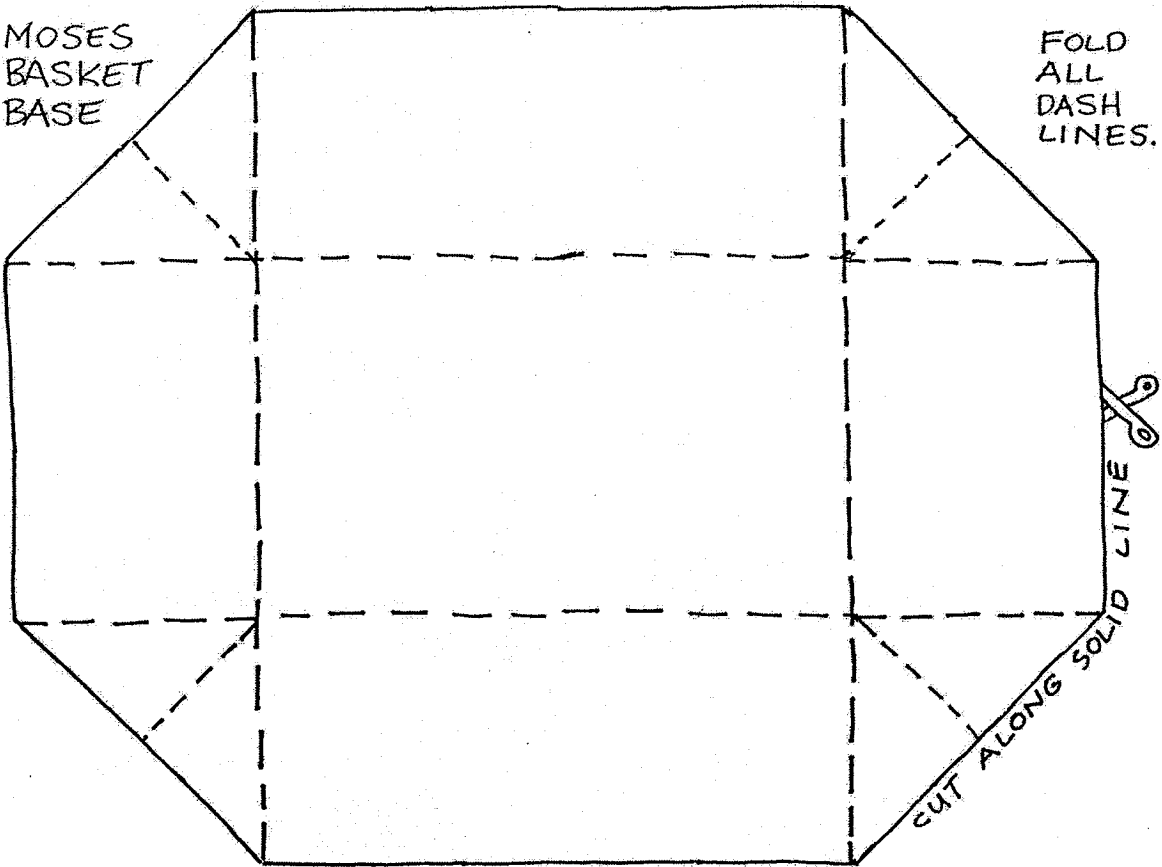


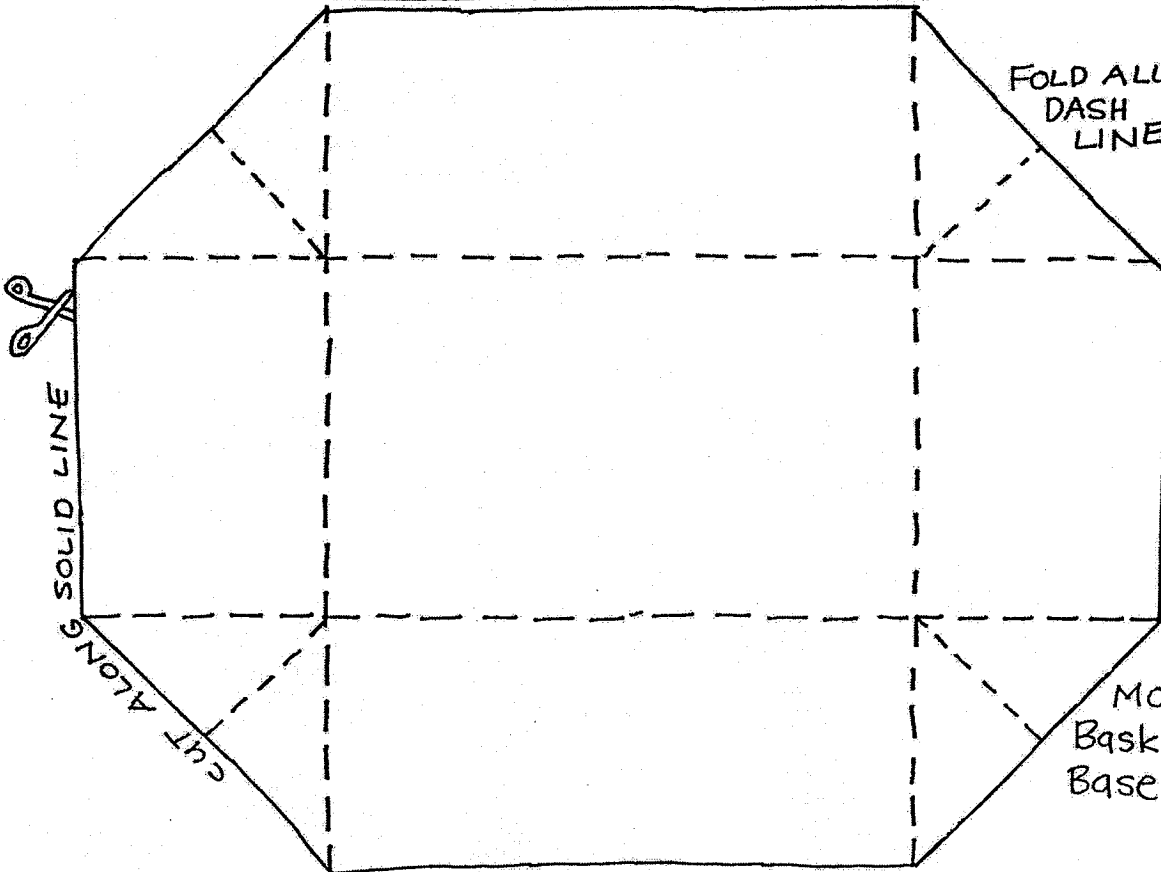
MOSES  
BASKET  
BASE

FOLD  
ALL  
DASH  
LINES.



CUT  
ALONG  
SOLID  
LINE

FOLD  
ALL  
DASH  
LINES.

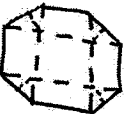


CUT  
ALONG  
SOLID  
LINE

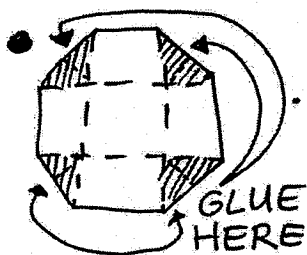
MOSES  
Basket  
Base

# INSTRUCTION SHEET "BASKET FOR BABY MOSES"

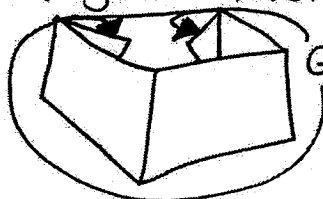
- Photocopy Basket Base (BLM1). 1x per child. You can use white or coloured paper.

-  STUDENT TO CUT OUT BASKET BASE AND FOLD ALL DASHED LINES BEFORE YOU GLUE DOWN LITTLE FLAPS.

**NOTE** ... IF YOU ARE ONLY DECORATING WITH COLOUR DO THAT BEFORE ANY GLUING.



...Fold glued corners inwards, then glue them onto inside



GLUE DOWN INSIDE HERE.

- Glue onto outside of basket small twigs, paper bark pieces, straw or tiny leaves and flowers. Wool, string etc.

